



WIDA Alternate ACCESS ELP ASSESSMENT



Kansas leads the world in the success of each student.

Kansas Alternate ACCESS Checklist

- This state checklist is a guide for personnel involved in administering WIDA Alternate ACCESS.
- The checklist highlights all tasks that need to be completed **before**, **during**, and **after** testing within a school or district and uses color to indicate who typically completes those tasks in your state.
- This checklist has been customized for Kansas. The state-specific clarification column contains guidance that your state education agency expects you to follow as you prepare for and administer the test.



Upcoming Deadlines

Test Materials Ordering Available in WIDA AMS (LEAs)	Fri 12/1/23	Fri 12/15/23
LEAs Import Student Data into WIDA AMS	Fri 12/1/23	Fri 12/15/23



WIDA AMS



WIDA AMS

DRC INSIGHT WIDA MY APPLICATIONS

LH

WIDA AMS

Welcome! What would you like to do today?

- Add/Edit Users
- Import Students
- Manage Students
- Manage Test Sessions / Registrations
- Download Individual Student Reports
- Score WIDA Screener Responses
- Order and Manage ACCESS Materials
- Download Status Reports
- Install and Configure Testing Software

Get Help Public Test Resources

Public Test Resources

- View the [Test Demo](#) to demonstrate test features to students. The Test Demo is a series of videos that explains to students how they will take the online test and interact with the test platform.
- Use the [Test Practice](#) items to help students understand how to respond to ACCESS for ELLs Online and WIDA Screener Online items on the test platform. While using the Test Practice items, students can familiarize themselves with the features available to them during the actual assessment. To access and view the Test Practice items on Windows, macOS, ChromeOS, or Linux devices, you must use the Chrome browser. If you are on an iPad, you must use the Safari browser.
- Use the [Sample Items](#) to help students, educators, and families get a better understanding of ACCESS for ELLs Online. None of the sample items appear on the operational test; however, they are similar to items that students will see on the test. To access and view the Sample Items on Windows, macOS, ChromeOS, or Linux devices, you must use the Chrome browser. If you are on an iPad, you must use the Safari browser.

© DRC Insight 2023

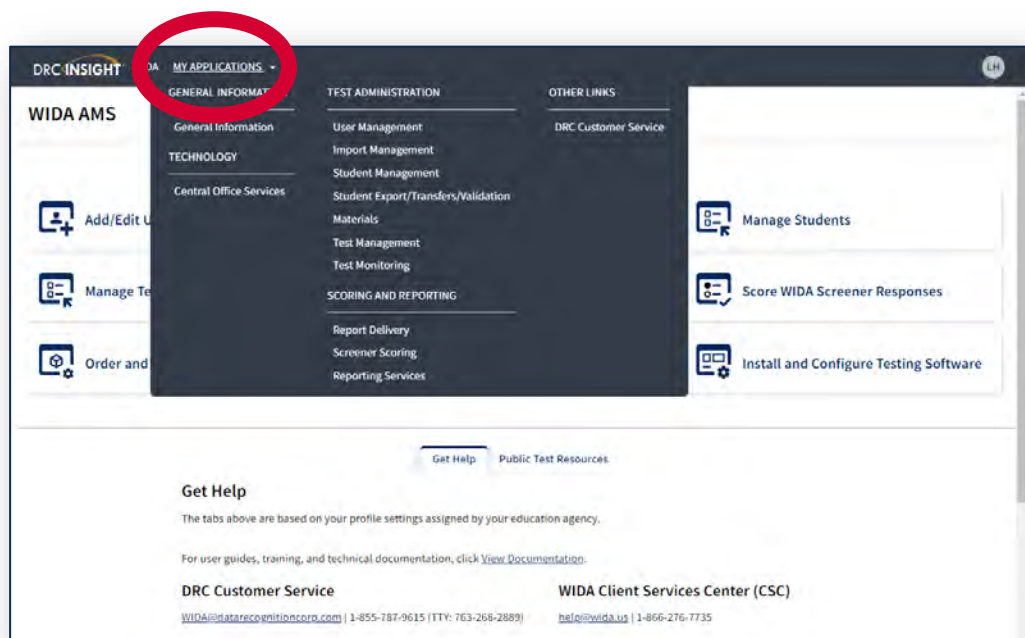
[Contact Us](#) [Terms of Use](#) [Privacy Policy](#) [Browser Requirements](#)

DRC



WIDA AMS Main Navigation Menu

Click My Applications to display a dropdown menu



- Student Management
- Test Management
- Import Management
- Materials



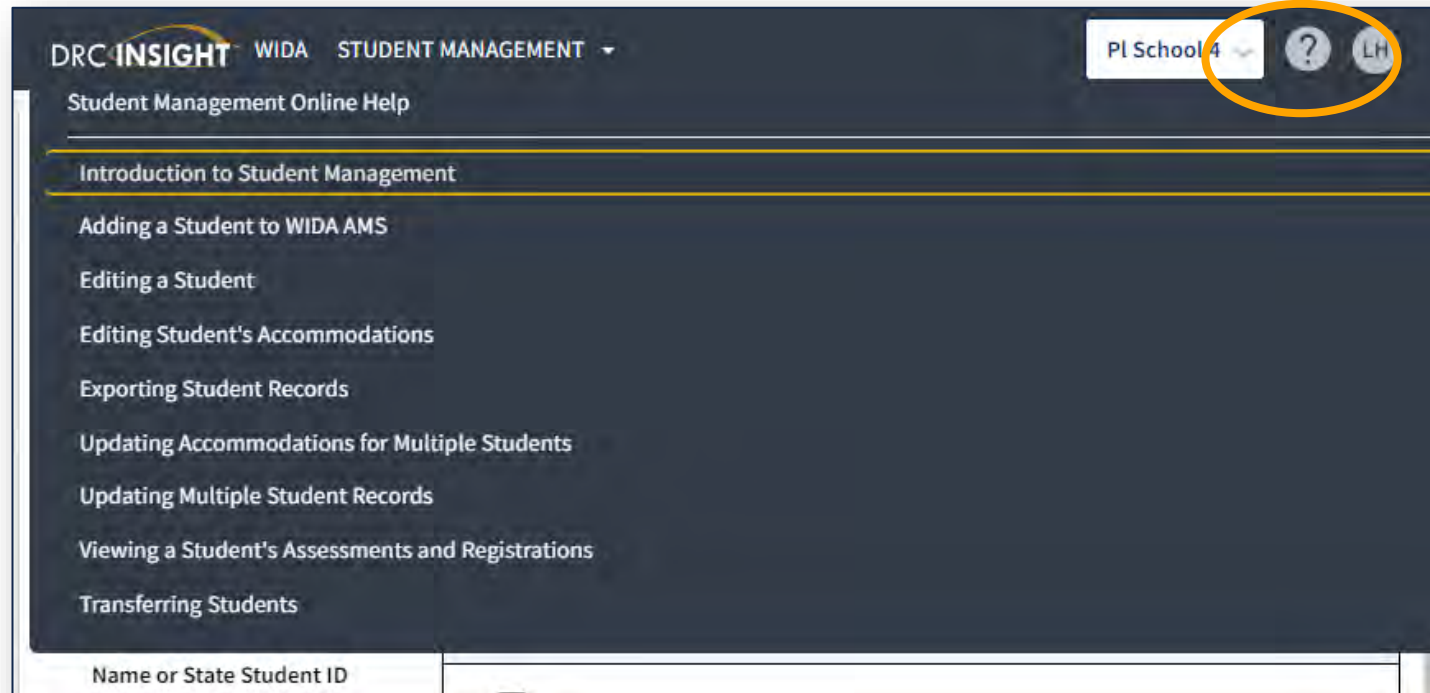
New Feature and Applications

New

The screenshot shows the DRC INSIGHT WIDA interface. At the top left, the logo 'DRC INSIGHT WIDA' is displayed. A dropdown menu is open for 'GENERAL INFORMATION', showing a list of options: 'General Information', 'TECHNOLOGY', and 'Central Office Services'. To the right of this menu, there are sections for 'TEST ADMINISTRATION' (with links for User Management, Import Management, Student Management, Student Export/Transfers/Validation, and Materials) and 'SCORING AND REPORTING' (with links for Report Delivery, Screener Scoring, and Reporting Services). On the far right, there is an 'OTHER LINKS' section with a link for 'DRC Customer Service'. The user's initials 'LH' are visible in the top right corner. The footer of the page includes the copyright notice '© DRC Insight 2023' and the DRC CORPORATION logo.

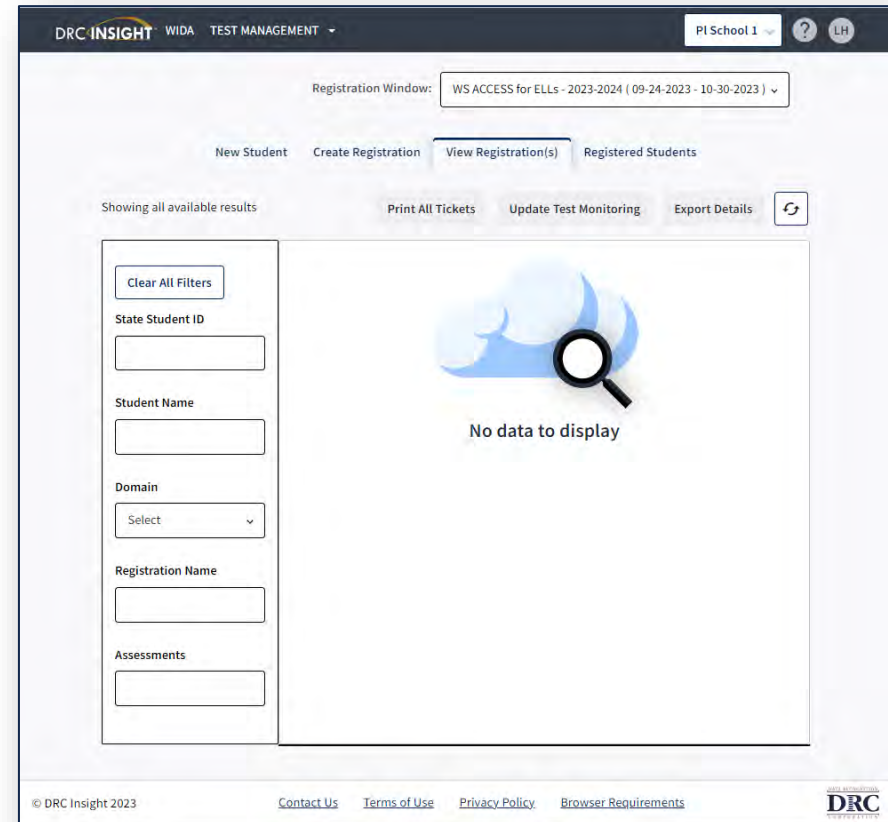


Online Help Feature



Test Management

- Confirm or select registration window
- Create a new student and add them to a registration
- View/edit registrations
- Print test tickets

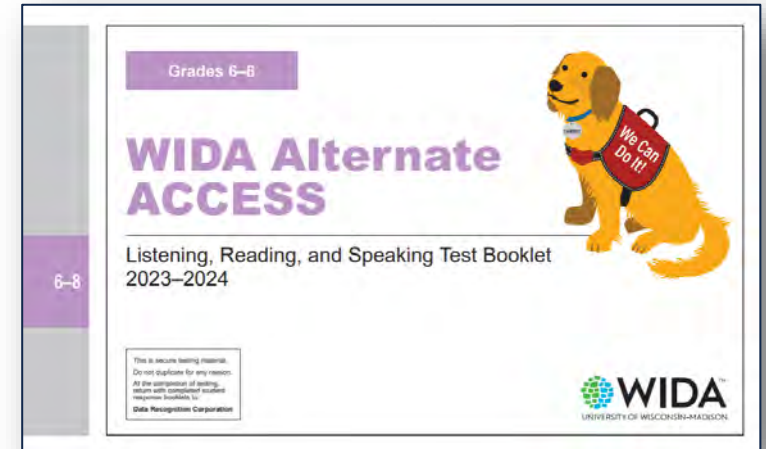
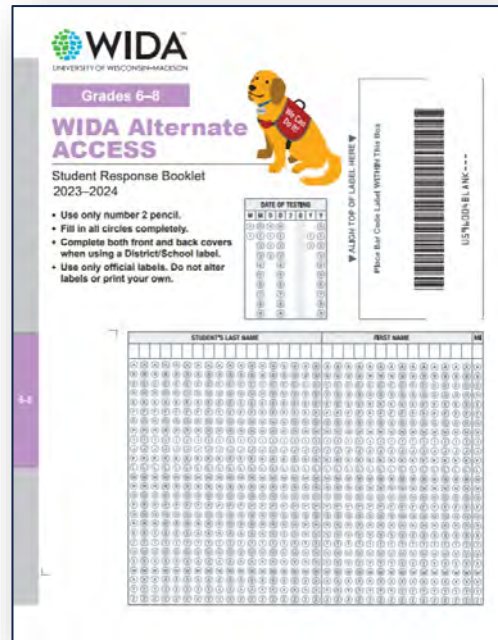
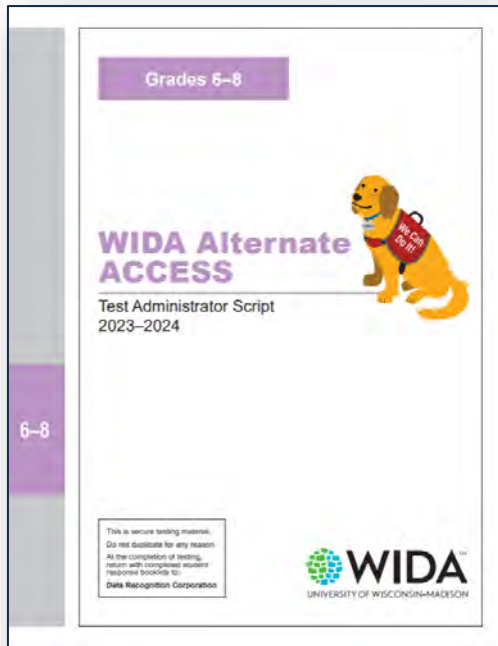


Materials Arrive

- All materials shipped are securely and must be signed for upon delivery.
- Use the boxes to return materials when you finish testing.

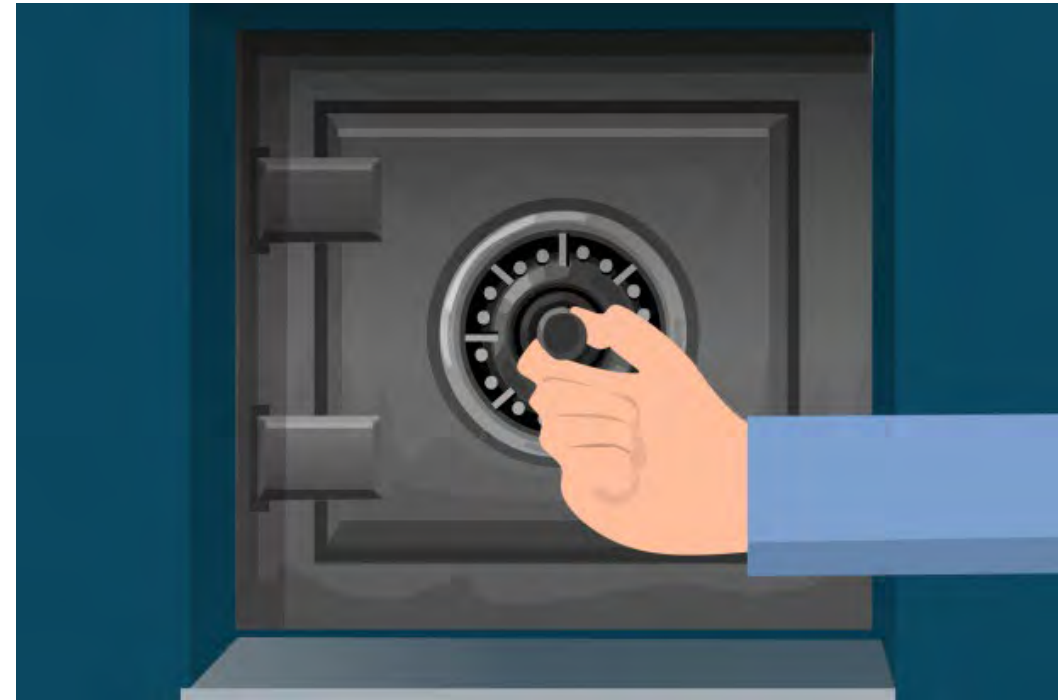


Alternate ACCESS Materials



Secure and Confidential

- Only authorized staff handles test materials.
- Place all secure materials in locked storage.
- Do not leave materials unattended
- Do not share test information with students.
- Do not copy any test booklets or other secure materials

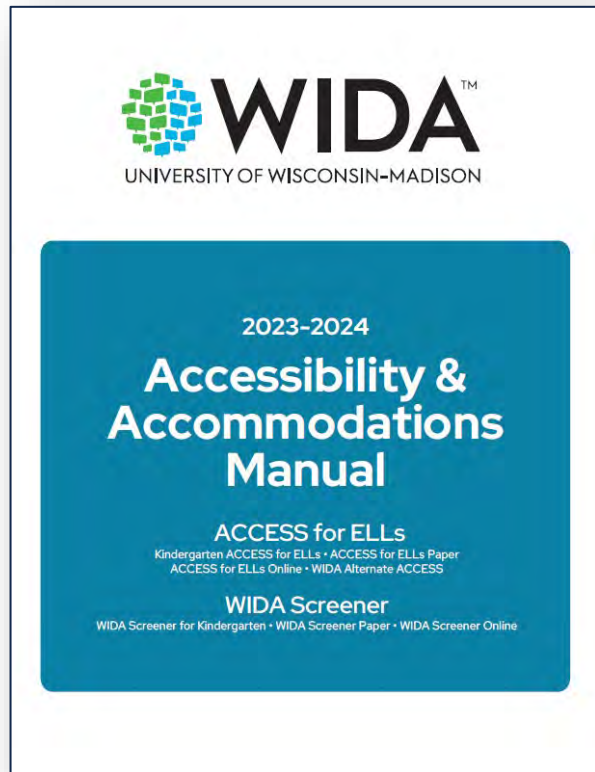


District and School Test Coordinator Manual

- Provides information on the management and logistics of test administration.
 - Sectioned by main responsibilities
 - Scheduling
 - Returning materials
-
- We are in the process of customizing a KS specific document that will contain information pertinent to the Alternate ACCESS only. This will be housed on the WIDA Secure Portal.



WIDA KS Accessibility and Accommodations Framework

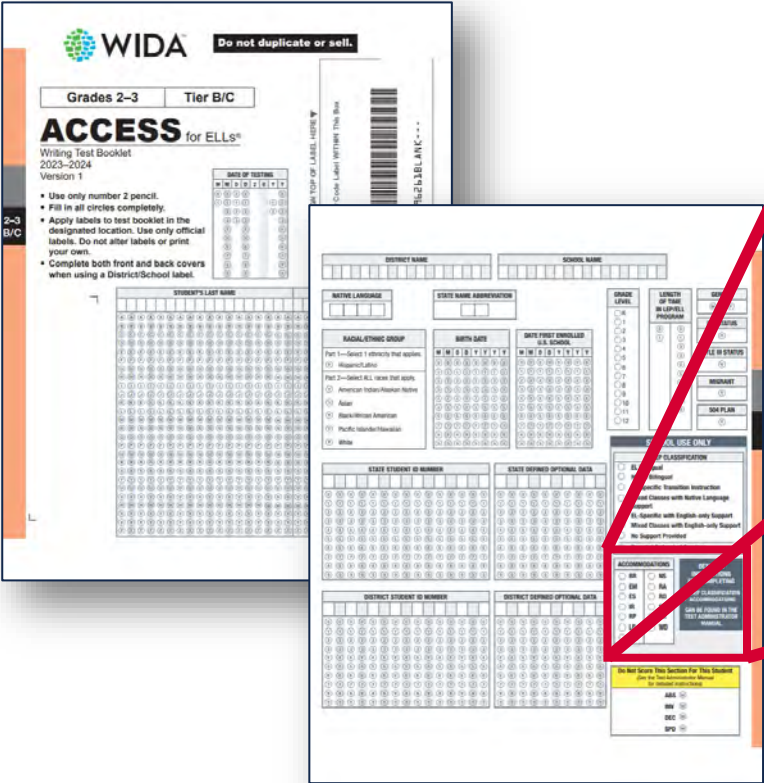


- Provides information on the accessibility and supports
- Participation guidance
- Accommodations
- Accommodations checklist
- The Kansas specific manual is posted on the KSDE DLM website and the WIDA Secure Portal



Documenting Accommodations

Bubble test booklet



ACCOMMODATIONS	
<input type="radio"/> BR	<input type="radio"/> NS
<input type="radio"/> EM	<input type="radio"/> RA
<input type="radio"/> ES	<input type="radio"/> RD
<input type="radio"/> IR	<input type="radio"/> SD
<input type="radio"/> RP	<input type="radio"/> SR
<input type="radio"/> LP	<input type="radio"/> WD
<input type="radio"/> MC	

DETAILED INSTRUCTIONS FOR COMPLETING

- LIEP CLASSIFICATION
- ACCOMMODATIONS

CAN BE FOUND IN THE TEST ADMINISTRATOR MANUAL



Contacts



WIDA

Contact the WIDA Client Services Center for questions regarding

- Assessments, training, and certification
- WIDA Secure Portal login credentials and account creation
- Test administration preparation and procedures
- Content of score reports
- Standards and Can Do Descriptors
- help@wida.us 1-866-276-7735

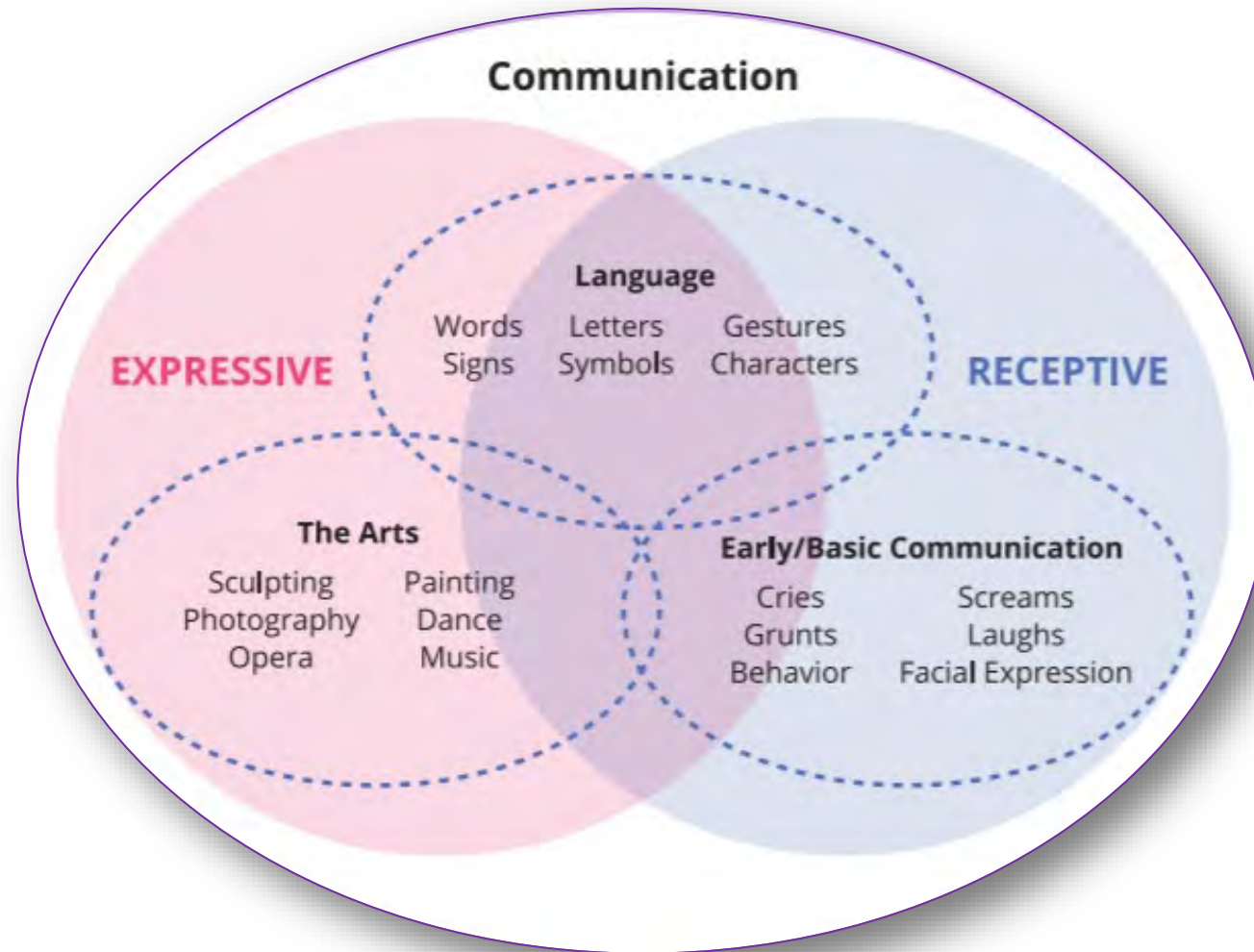
DRC

- Contact Data Recognition Corp for questions regarding
- WIDA AMS logins and permissions
- Test material ordering for initial materials and additional materials
- Returning test materials
- Booklet labels
- Editing/adding student information
- Student transfers
- Viewing reports
- WIDA@datarecognitioncorp.com 1-855-787-9615

English Learners with Most Significant Cognitive Disabilities



Communication



Communication Beliefs

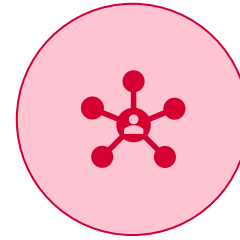


All individuals and all behaviors (including gestures, cries, noises)

communicate.

Every step toward improved

communication, attention, and interaction leads to increased independence.

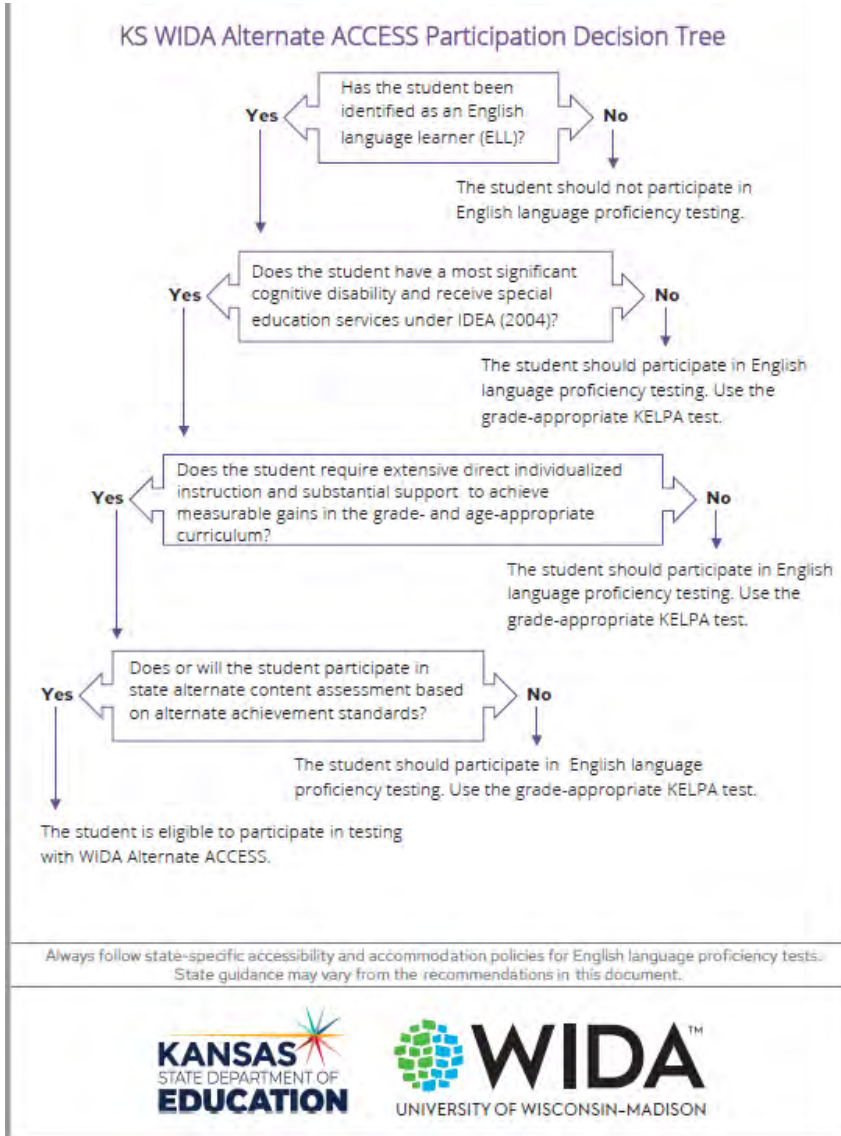


Communication is possible and identifiable for all students.

No more fundamental outcome of education exists than the *right* and the *ability* to **communicate.**



Participation Decision Tree



Rubric for Determining Student Eligibility for the Kansas Alternate Assessment (DLM)

